



Geotechnical investigations - Holmwood Street, Newtown

Work is underway on WestConnex which involves widening and extending the M4 and M5 and joining them to create a free-flowing motorway network.

Preparations are underway to **start construction work for the M4-M5 Link** - the third stage of the WestConnex project linking the M4 at Haberfield to the M5 at St Peters via underground tunnels.

What we're doing

Geotechnical investigations will be carried out in Holmwood Street, Newtown (see map overleaf) from **Tuesday, 12 February 2019**. The work is expected to take up to **three weeks to complete**, weather and site conditions permitting. This work provides important information about the existing ground conditions that informs the project design.

Work will take place between **7.00am - 6.00pm Monday to Friday and 8.00am - 1.00pm on Saturdays**. If work is required outside of these hours, local residents will be notified in advance.

The work will involve:

- Identifying underground services and utilities
- Setting up a safe work area with site specific environmental controls
- Traffic and pedestrian management to ensure the safety of motorists, residents and workers
- Setting up a drill rig that is mounted onto the back of a truck or a track mounted drill rig
- Drilling small diameter boreholes into the ground and extracting soil samples

Equipment required for this work includes, but is not limited to; vacuum truck, truck or track mounted drilling equipment, light vehicles, generators and hand tools.

How this affects you

This work is expected to have some noise impacts on nearby residents and the Project is committed to minimising construction noise to surrounding residents and businesses by using non-tonal reversing beepers on all

Keeping you informed

We are committed to keeping you informed and will provide regular information on the M4-M5 Link through direct mail and email notifications, community updates, local papers and face-to-face activities.

If you have an enquiry or complaint about this work, please contact the M4-M5 Link Tunnels team on toll free 1800 660 248 or, email

info@m4-m5linktunnels.com.au



We speak your language

Need an interpreter?
Call the Translating and Interpreting Service on **131 450**.

Notification No.MT034

Constructed by

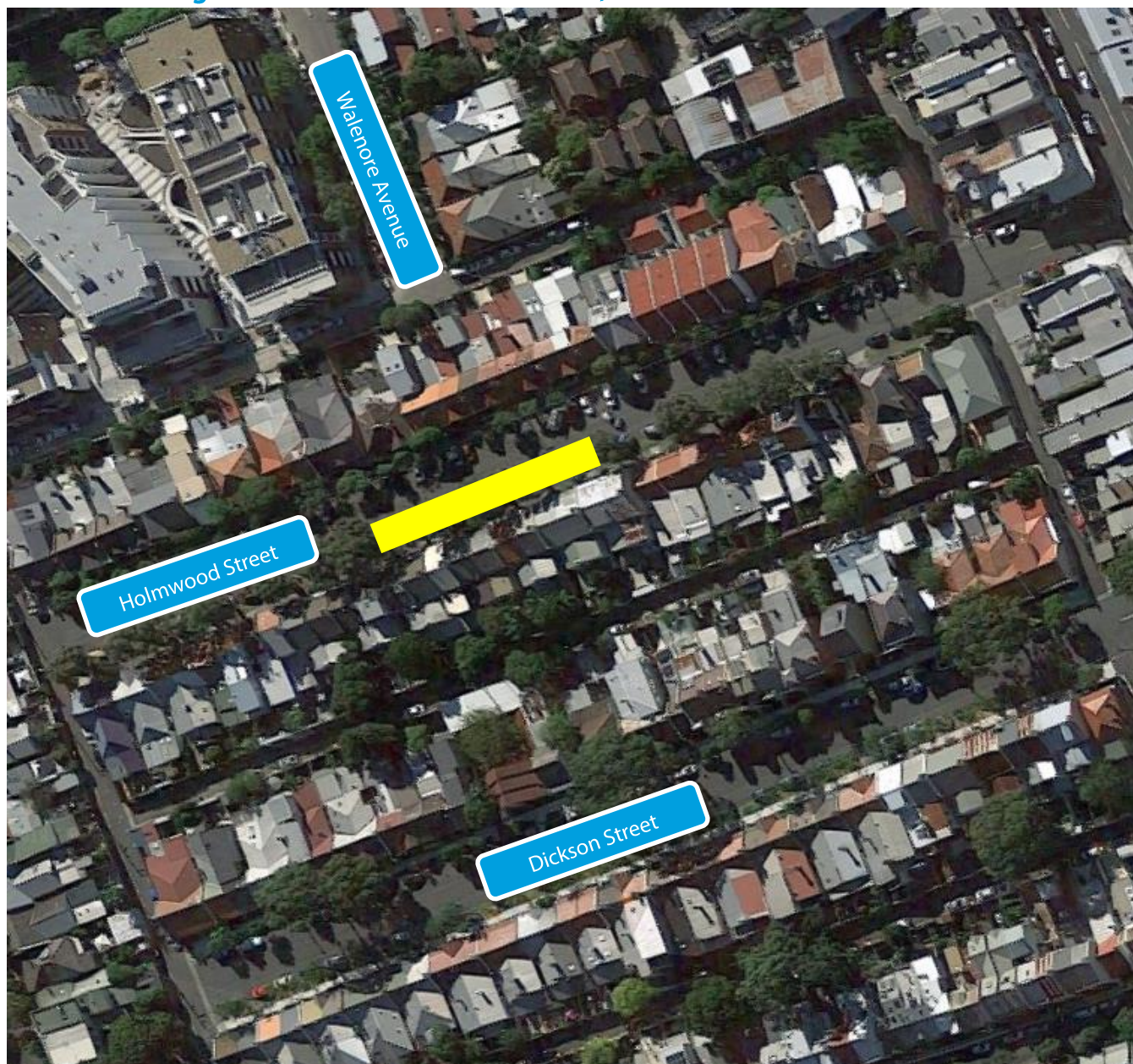


machinery, turning off equipment and vehicles when not in use, directing noisy equipment away from residences, where possible and installing noise blankets around temporary work areas.

Temporary work areas will be set up to allow the work to be carried out safely. These areas will be reinstated at the completion of each borehole.

During the work, temporary parking, traffic and pedestrian changes will be required including traffic control and directional signage. Access to buildings and driveways will be maintained at all times.

Geotech investigation work - Holmwood Street, Newtown



Investigation area



Map data © 2018 Google