

26 June 2017

Traffic switch work between Homebush Bay Drive and Silverwater Road

Work is underway on WestConnex which involves widening and extending the M4 and M5 and joining them to create a free-flowing motorway network.

As part of the project, the M4 is being widened between Granville and Homebush from three to four lanes in each direction, alleviating congestion. Visit westconnex.com.au/M4Widening for more information.

From **Saturday, 1 July 2017** construction work will commence for traffic switch work, between Homebush Bay Drive and Silverwater. A map showing the location of the work is provided overleaf.

This work is expected to take **2 nights** to complete, weather permitting.

To ensure the safety of workers and motorists, this work will take place between **10.00pm to 5.00am**.

Equipment used during the work will include, linemarking truck, water blaster, hammer drill, grinder and rattle gun.

There will be some noise associated with this work, however every effort will be made to minimise the impact of work, including by using non-tonal reversing beepers on all machinery, turning off equipment and vehicles when not in use and, where possible, directing noisy equipment and lights away from residences.

Traffic control and detours will be in place to ensure the safety of motorists, residents and workers. If you travel along the work route, please allow extra travel time and follow the direction of traffic controllers and signage.

If you would like further information about the upcoming work, please contact toll free 1800 660 248 and ask to speak to a member of the M4 Widening team or email community.info@rcpbjv.com.au.

Notification reference: N161

ABOUT WESTCONNEX

WestConnex is part of a broader transport plan for Sydney which includes improved public transport, such as Sydney Metro and light rail, as well as better, more reliable motorway solutions. More than two-thirds of WestConnex will be built underground. Once complete, motorists will be able to avoid up to 52 sets of traffic lights and enjoy significant travel time savings.

For more information

 community.info@rcpbjv.com.au

 1800 660 248

 westconnex.com.au



Drop in to the Community Information Centre

Open 9:00am to 5:00pm Monday to Friday

(excluding public holidays)

1/75 Carnarvon Street, Silverwater NSW 2128

Constructed by





Easing
congestion

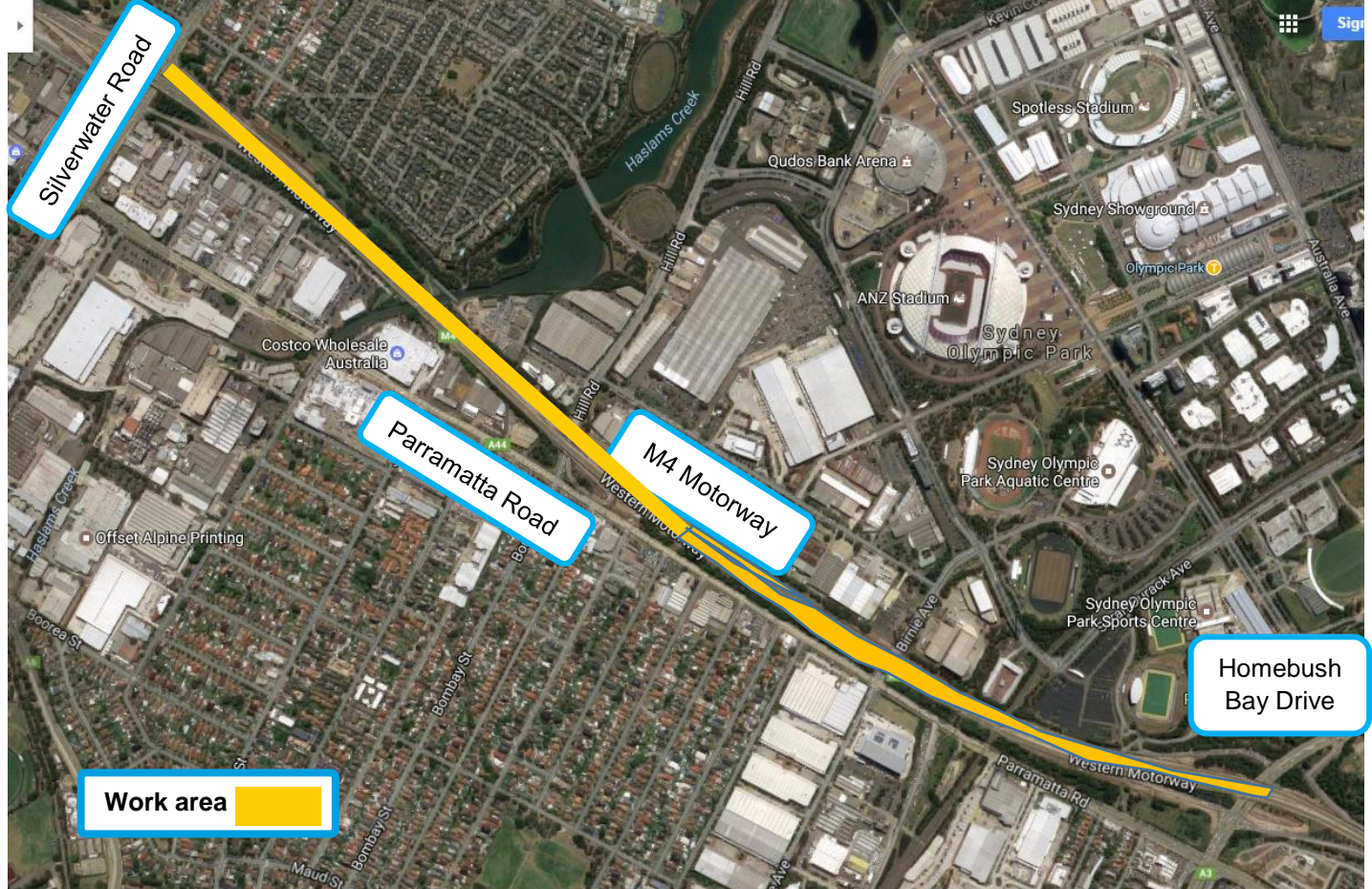


Creating
jobs



Connecting
communities

Location of traffic switch works between Homebush Bay Drive and Silverwater Road.



Map data © 2016 Google



We speak your language

ENGLISH

To learn more, simply visit westconnex.com.au/yourlanguage. Need an interpreter? Call the Translating and Interpreting Service on 131 450.

ARABIC

لمعرفة المزيد، ما عليك سوى زيارة westconnex.com.au/yourlanguage. بحاجة إلى مترجم؟ اتصل بخدمة الترجمة الكتابية والترجمة الشفوية على الرقم 131450.

CHINESE

如需了解更多详情，请访问 westconnex.com.au/yourlanguage。如需翻译，请拨打翻译与口译热线131 450

GREEK

Για να μάθετε περισσότερα, απλά επισκεφθείτε το westconnex.com.au/yourlanguage. Χρειάζεστε διερμηνέα; Καλέστε την Υπηρεσία Μεταφραστών και Διερμηνέων στο 131 450.

HINDI

अधिक जानने के लिए केवल westconnex.com.au/yourlanguage पर देखें। क्या आपको दुभाषिए की ज़रूरत है? अनुवाद व दुभाषिया सेवा को 131 450 पर फ़ोन करें।

ITALIAN

Per saperne di più, vai semplicemente al sito westconnex.com.au/yourlanguage. Hai bisogno di un interprete? Chiama il servizio d'interpretazione e traduzione al numero 131 450.

KOREAN

더 자세히 알고 싶으시면, 바로 westconnex.com.au/yourlanguage 를 방문하시면 됩니다. 통역사가 필요하십니까? 번역 및 통역 서비스에 131 450으로 연락하십시오.

VIETNAMESE

Để biết thêm, chỉ cần tới trang mạng westconnex.com.au/yourlanguage. Cần thông dịch viên? Hãy điện thoại cho Dịch vụ Thông Phiên Dịch ở số 131 450.