



M4-M5 Link Rozelle Interchange

Rozelle Interchange and Iron Cove Link is the most complex stage of the M4-M5 Link connecting to the surrounding road network and future Western Harbour Tunnel via underground tunnels. It will include an underground tunnel from the Rozelle Interchange to Victoria Road near Iron Cove Bridge, known as the 'Iron Cove Link'.

What we're doing

Roads and Maritime Services is carrying out geotechnical investigations and site inspections to gather information about the ground conditions. We will be working on Waterloo Street, opposite the off street parking facility, in Rozelle. We have included a map to show the location of the work.

The work includes drilling boreholes and extracting soil samples using borehole drilling equipment. The work requires light vehicles and a trailer mounted generator. Heavy vehicles will not be used.

Our work schedule

We will be working for two days between Thursday, 23 August and Friday, 7 September 2018, weather permitting. Our work will take place between **7am** and **6pm** from **Monday** to **Friday**.

How will the work impact you?

Our work may be noisy at times and we will continue to do everything we can to minimise impact. The initial works may generate noise associated with drilling, which is similar to the noise created by a small diesel generator.

Traffic changes and vehicle access

There may be temporary traffic changes to ensure the work zone is safe. Street parking in the work zone will be temporarily unavailable during shift hours. We will also be parking vehicles on nearby side streets before and after shifts, which will affect available street parking in this period. Access to properties and driveways will be maintained. Pedestrian detours will be managed in association with this work to maintain pedestrian footpath access.

Traffic control and pedestrian management will be in place to ensure the safety of road users. If you travel along the route, please allow extra travel time and follow the directions of traffic controllers. For the latest traffic updates, you can call 132 701, visit livetraffic.com or download the Live Traffic NSW App.

Keeping you informed

We are committed to keeping you informed and will provide regular information on the Rozelle Interchange and Iron Cove Link through direct mail and email notifications, community updates, local papers and face-to-face activities.

You can also contact the WestConnex info line on **1800 660 248**, email info@westconnex.com.au or visit westconnex.com.au/m4-m5



We speak your language

Need an interpreter? Call the Translating and Interpreting Service on **131 450**.

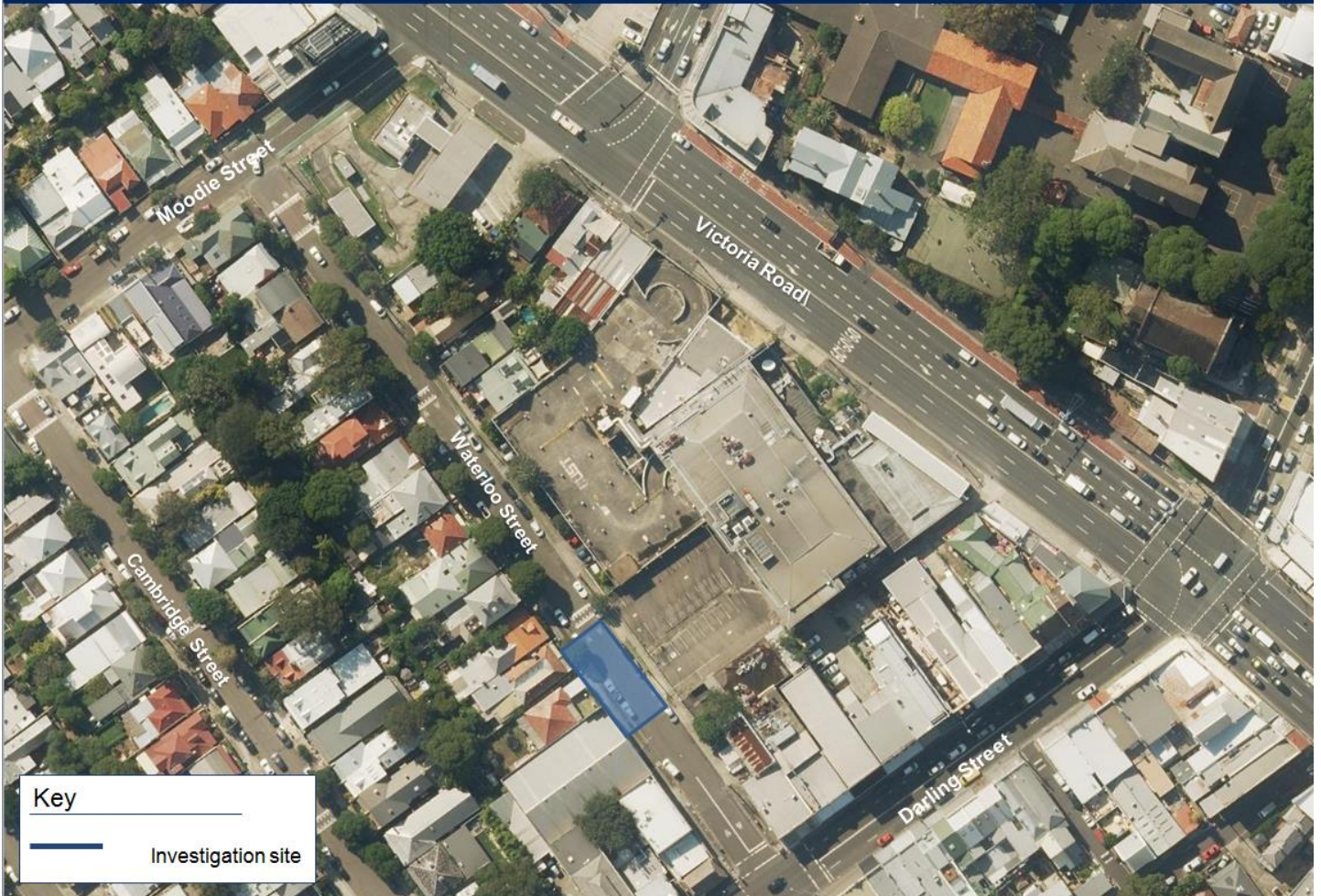


Australian Government

BUILDING OUR FUTURE



Location of geotechnical investigation work on Waterloo Street, Rozelle



Translating and Interpreting Service

If you need an interpreter, please call the Translating and Interpreting Service (TIS National) on **131 450** and ask them to telephone Roads and Maritime Services on 1800 660 248

Arabic
إذا كنتم بحاجة إلى مترجم، الرجاء الاتصال بخدمة الترجمة الخطية والشفوية (TIS National) على الرقم **131 450** والطلب منهم الاتصال بوكالتكم Roads and Maritime Services على الرقم 1800 660 248

Cantonese
若你需要口譯員，請致電 **131 450** 聯絡翻譯和口譯服務署 (TIS National)，要求他們致電 1800 660 248 聯絡 Roads and Maritime Services。

Mandarin
如果你需要口译员，请致电 **131 450** 联系翻译和口译服务署 (TIS National)，要求他们致电 1800 660 248 联系 Roads and Maritime Services。

Greek

Αν χρειάζεστε διερμηνέα, παρακαλείσθε να τηλεφωνήσετε στην Υπηρεσία Μετάφρασης και Διερμηνείας (Εθνική Υπηρεσία TIS) στο **131 450** και ζητήστε να τηλεφωνήσουν Roads and Maritime Services στο 1800 660 248

Italian

Se desiderate l'assistenza di un interprete, prego telefonare al Servizio Interpreti e Traduttori (TIS National) al **131 450** chiedendo di contattare Roads and Maritime Services al 1800 660 248

Korean

통역사가 필요하시면 번역통역서비스 (TIS National) 에 **131 450** 으로 연락하여 이들에게 번으로 1800 660 248 Roads and Maritime Services 에 전화하도록 요청하십시오.

Vietnamese

Nếu cần thông ngôn viên, xin quý vị gọi cho Dịch Vụ Thông Phiên Dịch (TIS Toàn Quốc) qua số **131 450** và nhờ họ gọi cho Roads and Maritime Services qua số 1800 660 248