

21 August 2017

Delivery and installation of roofing planks – Concord

Night work is required for the delivery and installation of roof planks for the cut and cover tunnel associated with the new Concord Road Interchange. A map showing the location of the work is provided overleaf.

Timing and Work Hours

Work will commence from **Friday 27 August 2017** and will take three weeks to complete. To ensure the safety of workers and motorists, and where road access restrictions are in place this work has been scheduled to take place **between 8.00 pm and 5.00 am Monday to Sunday**.

Work Activities

This work will take approximately **three weeks** to complete, weather permitting, and will involve:

- set up lighting equipment on site
- delivery of planks to site via M4
- placement of roofing planks into position using a 250t crane.

Equipment used during the work will include a 250t crane, delivery truck and lighting equipment.

Minimising Impacts

There will be some noise associated with this work, however, every effort will be made to minimise the impact of work, including using non-tonal reversing beepers on all machinery at night, turning off equipment and vehicles when not in use and, where possible, directing noisy equipment away from residences. All sites will be restored to their previous condition.

Traffic Changes

There are no traffic changes or closures to roads associated with these deliveries.

If you have an enquiry or complaint about this work, please contact toll free 1800 660 248 and ask to speak to a member of the M4 East team or email info@M4East.com.au.

Notification No. N246

ABOUT WESTCONNEX

WestConnex is part of a broader transport plan for Sydney which includes improved public transport, such as Sydney Metro and light rail, as well as better, more reliable motorway solutions. More than two-thirds of WestConnex will be built underground. Once complete, motorists will be able to avoid up to 52 sets of traffic lights and enjoy significant travel time savings.

Constructed by





Easing congestion

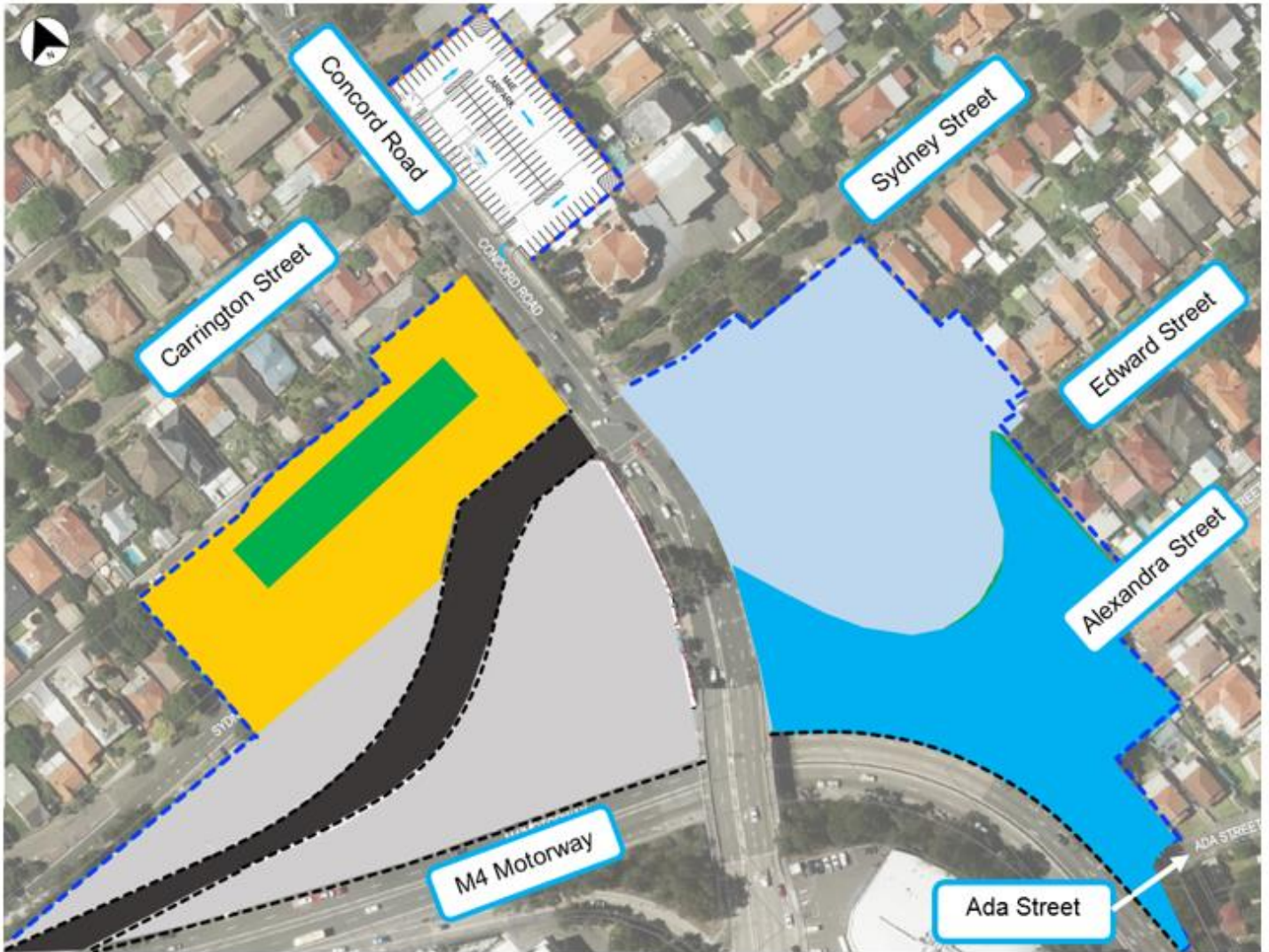


Creating jobs



Connecting communities

Location of cut and cover, Concord



Location of cut and cover
(work site)



Map data © 2017 Google



We speak your language

To learn more simply visit westconnex.com.au/yourlanguage. Need an interpreter? Call the Translating and Interpreting Service on 131 450