



Night work - M4 Motorway, North Strathfield

Further to notification (N272c), from Monday, 14 May 2018, night work will continue on the M4 Motorway between Parramatta Road and Sydney Street, North Strathfield.

This work is required to construct the bridge which will allow access from Concord Road to the New M4 westbound, as well as to install the associated Intelligent Transport System.

This work is expected to take up to three months to complete, weather permitting. You will be updated monthly of the progress of this work.

A map showing the location of the work is provided overleaf.

What we're doing

The work will involve:

- installing precast concrete slabs/decks on the bridge structure
- concrete work including formwork
- installing drainage
- backfilling retaining walls
- installing barriers, guard rails and panels
- ITS installation including saw cutting, excavation, conduit install and backfilling
- mobilising and demobilising a 100t mobile crane.

Equipment used will include a mobile crane, franna crane, concrete boom pumps, slip form paver, excavator, Elevated Work Platform (EWP), plate compactors, hammer drills, concrete trucks, hand tools, lighting equipment and concrete vibration equipment.

How this affects you

The M4 Motorway will be closed westbound between Parramatta Road and the Powells Creek on-ramp and eastbound between the Sydney Street off-ramp and Parramatta Road.

There will also be closures on Concord Road from Parramatta Road to



Sydney Street, Concord.
Constructed by



When

Mon 14 May to Thurs 14 June 2018

Hours of operation

9.00 pm and 6.00 am Sun to Fri

Where

M4 Motorway, North Strathfield and Concord Road, Concord

For more information

Drop in to the Community Information Centre

52 Railway Parade, Burwood NSW 2134

We speak your language



Visit westconnex.com.au.

Need an interpreter?

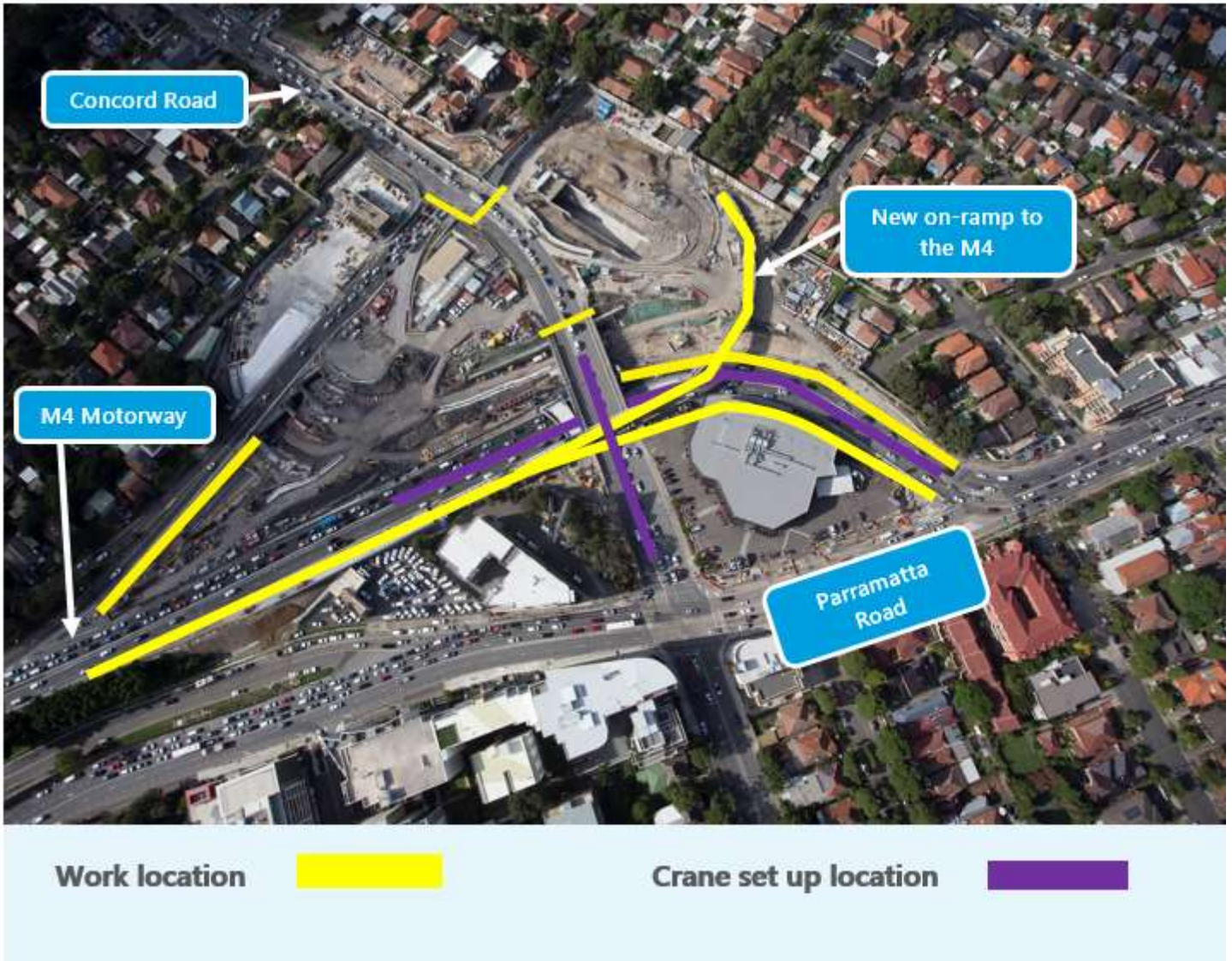
Call the Translating and Interpreting Service on 131 450.

Notification No.N272d

If you travel along the work route, please allow extra travel time and follow the signage and direction of traffic controllers.

There will be some noise associated with this work and every effort will be made to minimise this including by turning off equipment and vehicles when not in use and directing noisy equipment away from residences where possible.

If you have an enquiry or complaint about this work, please contact toll free 1800 660 248 and ask to speak to a member of the M4 East team or email info@M4East.com.au.



Map data © 2018 Google