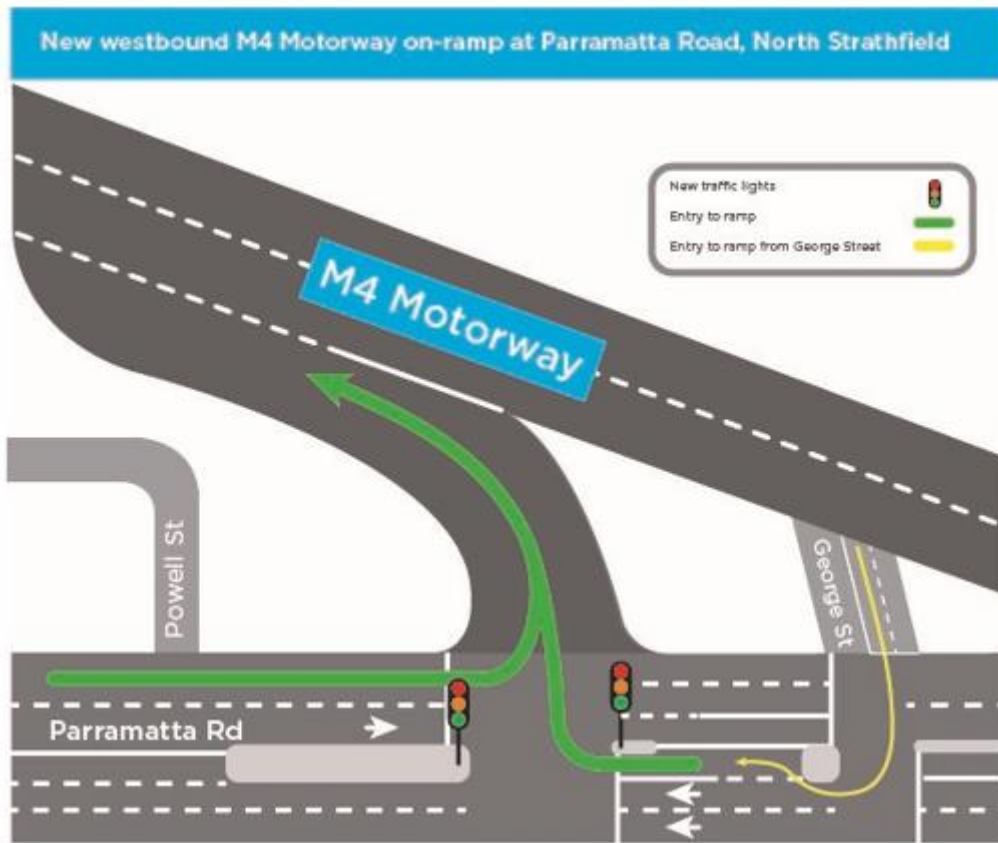


## New M4 Motorway on-ramp – Parramatta Road, North Strathfield

The new Powells Creek on-ramp to the M4 Motorway westbound will be open to traffic from **Saturday, 18 November 2017**. This on-ramp replaces the permanently closed M4 Motorway westbound on-ramp from Concord Road, North Strathfield.

This is a major milestone for the M4 East project, as it is the first piece of infrastructure completed and open to the public.

The map below illustrates how to access the new on-ramp from Parramatta Road, North Strathfield, shown in green. Motorists wishing to access the on-ramp from George Street must be in the right lane when turning onto Parramatta Road in order to use the turning lane for the new on-ramp.



Notification Reference: N274



### We speak your language

To learn more simply visit [westconnex.com.au/yourlanguage](http://westconnex.com.au/yourlanguage). Need an interpreter? Call the Translating and Interpreting Service on 131 450

Constructed by

