



Cul-de-sac reinstatement - Short Street east, Homebush

From Friday 6 July 2018, work will continue along Short Street east, Homebush to facilitate the reinstatement of the cul-de-sac. This work will take approximately one month to complete, weather permitting.

A map showing the location of the work is provided overleaf.

What we're doing

The work will involve:

- Landscaping
- Asphaltting

Equipment used will include trucks, excavator with attachments, franna crane, asphalt paver, profiler, asphalt trucks, vibratory roller, drum roller, electric saw, hand tools, water cart and lighting equipment.

How this affects you

There will be footpath closures associated with this work. Traffic control and pedestrian management will be in place to ensure the safety of motorists, residents and workers. Should access to driveways be affected, residents will be notified of this beforehand. If you travel along the work route, please allow extra travel time and follow the signage and direction of traffic controllers.

Asphaltting of Short Street is expected to take one night shift. Asphalt works are typically loud and are accompanied by a strong odour. Residents will be notified five days prior to the asphalt works.

Every effort will be made to minimise noise including by turning off equipment and vehicles when not in use and directing noisy equipment away from residences where possible.

When

Fri 6 July to Mon 6 August

Hours of operation

- 7am to 6pm Mon to Fri
- 8am to 1pm Sat
- 8pm to 5am Mon to Sun

Where

Short Street east,
Homebush

For more information

Drop in to the Community Information Centre

52 Railway Parade, Burwood

We speak your language



Need an interpreter?
Call the Translating and Interpreting Service on
131 450.

Notification No.N316d

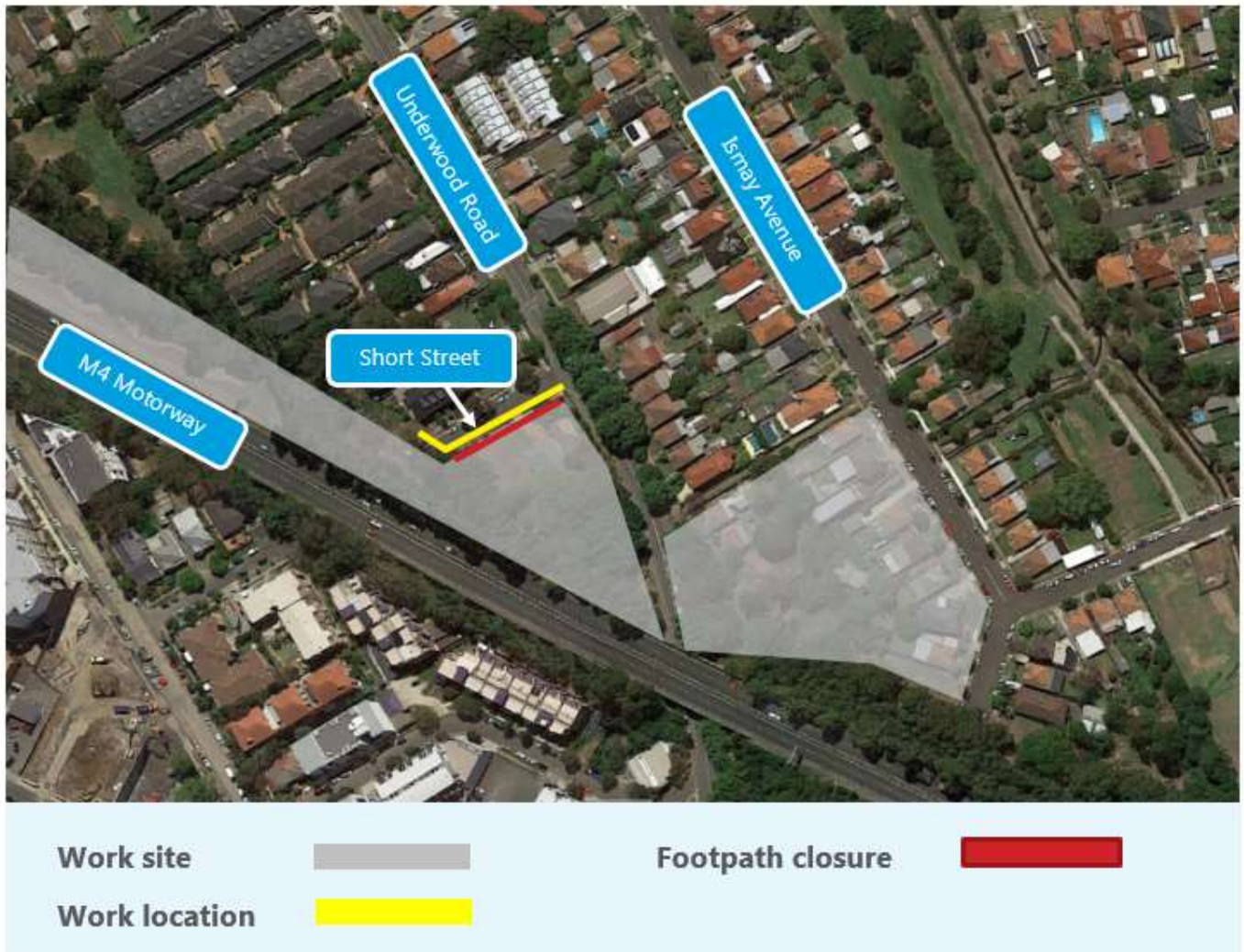


Constructed by



If you have an enquiry or complaint about this work, please contact toll free 1800 660 248 and ask to speak to a member of the M4 East team or email info@m4east.com.au.

Location of cul-de-sac reinstatement - Short Street east, Homebush



Map data © 2018 Google