



Temporary road closure - Waratah Street, Haberfield

To facilitate the construction of permanent pavement for the new Wattle Street interchange, Waratah Street at the intersection of Dobroyd Parade will be temporarily closed. The closure will be in place from 10.00 pm Friday, 13 April 2018 for 6 weeks.

A map showing the location of work and traffic changes is provided overleaf.

What we're doing

This work will involve:

- installing temporary barriers
- removing existing, redundant utility services and pavement
- installing new stormwater drainage
- installing new full depth pavement
- construction of new kerb and guttering
- installing new utility services, street lighting and ITS infrastructure
- backfilling and restoring the road surface.

Equipment used during the work will include franna cranes, trucks, plate compactors, rollers, pavers, vacuum trucks, hammers, concrete saws, excavators, lighting towers, generators, trucks, concrete agitators, line marking trucks and hand tools.

How this affects you

During this closure, motorists will be unable to turn into Waratah Street from Dobroyd Parade or out of Waratah Street onto Dobroyd Parade. Detours will be in place as per the map below. Motorists travelling eastbound on Wattle Street should complete a U-Turn via the temporary turning lane onto Wattle Street westbound to access the detour via Ramsay Street. Pedestrian access will be maintained on the eastern side of Waratah Street.

Motorists normally travelling citybound from Waratah Street can access City West Link via Mortley Avenue and the Timbrell Drive roundabout. Pedestrian access will be maintained on the eastern side of Waratah Street.

There will be some noise associated with this work and every effort will be made to minimise this by turning off equipment and vehicles when not in use and where possible, directing noisy equipment away from residences.

When

Fri 13 April to Sat 26 May 2018

Hours of operation

- 7am to 6pm Mon to Fri
- 8am to 1pm Sat
- 9pm to 5am Sun to Sat

Where

Waratah Street, Haberfield

For more information

Drop in to the Community Information Centre
52 Railway Parade, Burwood
9am to 5pm
Monday to Friday
(excluding public holidays)

We speak your language



Need an interpreter?
Call the Translating and Interpreting Service on
131 450.

Notification No.335



Australian Government

BUILDING OUR FUTURE

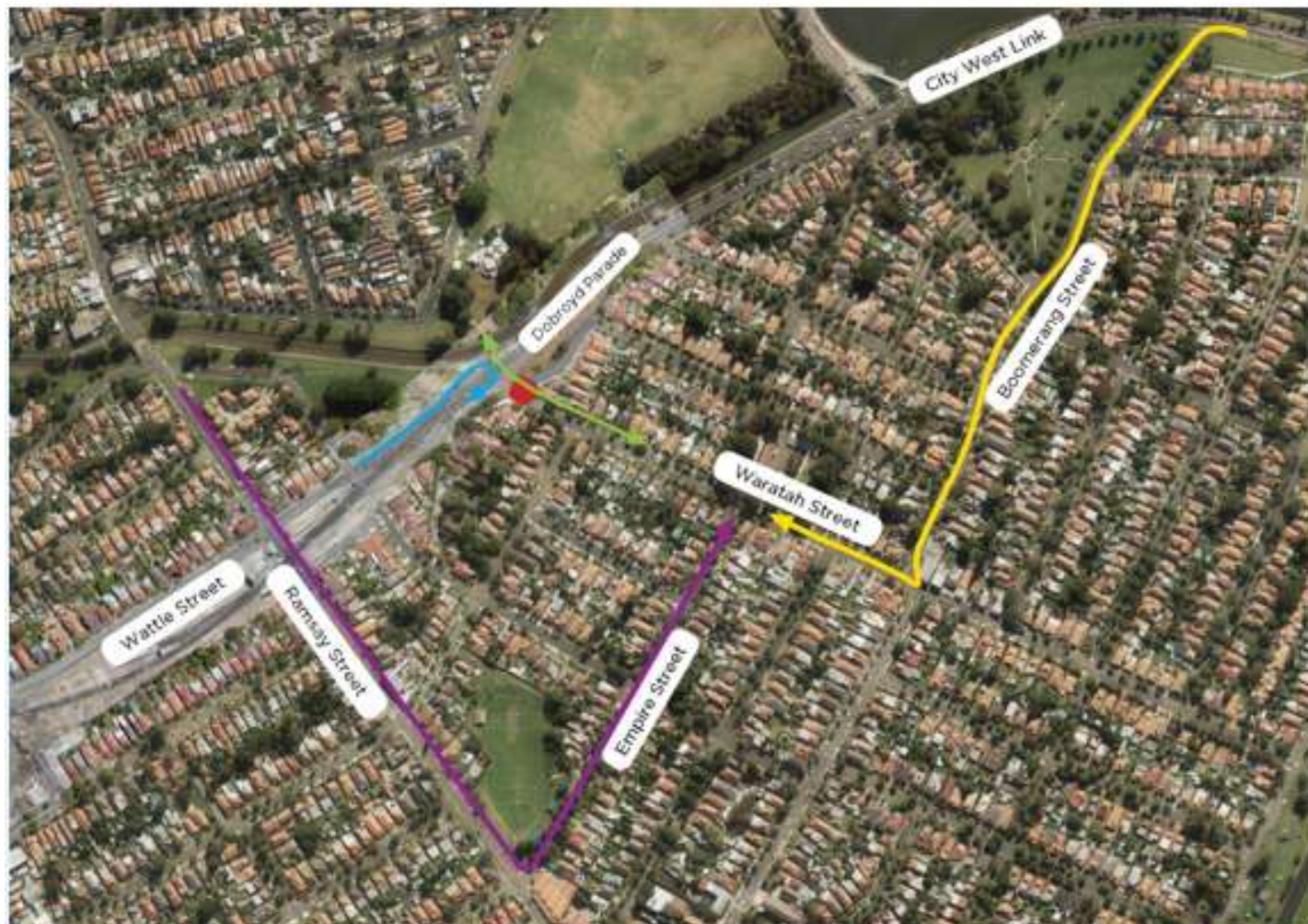
Constructed by



If you travel along this route for work, please allow extra travel time and follow the signage and the direction of traffic controllers. For the latest live traffic updates and more information on these closures, visit livetraffic.com, download the Live Traffic NSW App for iPhone, iPad and Android or call the Traffic Information Line on 132 701.

If you have an enquiry or complaint about this work, please contact toll free 1800 660 248 and ask to speak to a member of the M4 East team or email info@M4East.com.au.

Temporary road closure - Waratah Street Haberfield



Closure location



Eastbound detour



Westbound detour



Pedestrian access



Eastbound detour from Wattle Street



Apply for a community grant

Eligible community groups can apply for a grant up to \$10,000 to deliver initiatives that provide long-term benefits to local communities. To view the guidelines and terms and conditions and to complete your application online, visit sydneymotorway.com.au/grants



WestConnex

Submit your application from 12 March to 13 April 2018