



## Temporary road closure - Patterson Street, Concord

To facilitate the construction of permanent pavement for the new Concord Interchange, Patterson Street at the intersection of Concord Road will be temporarily closed (pending approval). To reduce traffic congestion in the area, Gipps Street will also be closed at Flavelle Street. Motorists should consider using Parramatta Road as an alternative route.

The closure will be in place from 9.00 pm Friday 8 June and will re-open at 5.00 am Tuesday 12 June 2018. A map showing the location of the work, traffic changes and pedestrian detour routes is provided on the following pages.

### What we're doing

The work will involve:

- installing temporary barriers and signage
- removing existing pavement
- installing new full depth pavement, including concrete saw cutting
- line marking
- construction of new kerb and guttering
- backfilling and restoring the road surface.

Equipment used will include franna cranes, trucks, plate compactors, rollers, pavers, vacuum trucks, hammers, concrete saws, excavators, lighting towers, generators, trucks, concrete agitators, line marking trucks and hand tools.

### How this affects you

During this closure, westbound motorists on Gipps Street will be detoured via Flavelle Street, Wellbank Street and Concord Road. Southbound motorists on Concord Road will be detoured via Concord Road, Parramatta Road and Broughton Street. Northbound motorists on Concord Road will be diverted via Wellbank Street, Flavelle Street and Gipps Street. Patterson/Gipps Street will remain open between Concord Road and Flavelle Street for local traffic only.

A pedestrian detour will be in place southbound on Concord Road (between Patterson Street and Sydney Street). Traffic control and pedestrian management will be in place to

### When

Fri 8 June to Tues 12 June

### Hours of operation

- 9pm Friday to 5am Tuesday

### Where

Patterson Street, Concord

### For more information

Drop in to the Community Information Centre

52 Railway Parade, Burwood

9am to 5pm

Monday to Friday

(excluding public holidays)

### We speak your language



Need an interpreter?

Call the Translating and Interpreting Service on **131 450**.

Notification No.N355



Australian Government

**BUILDING OUR FUTURE**



Constructed by

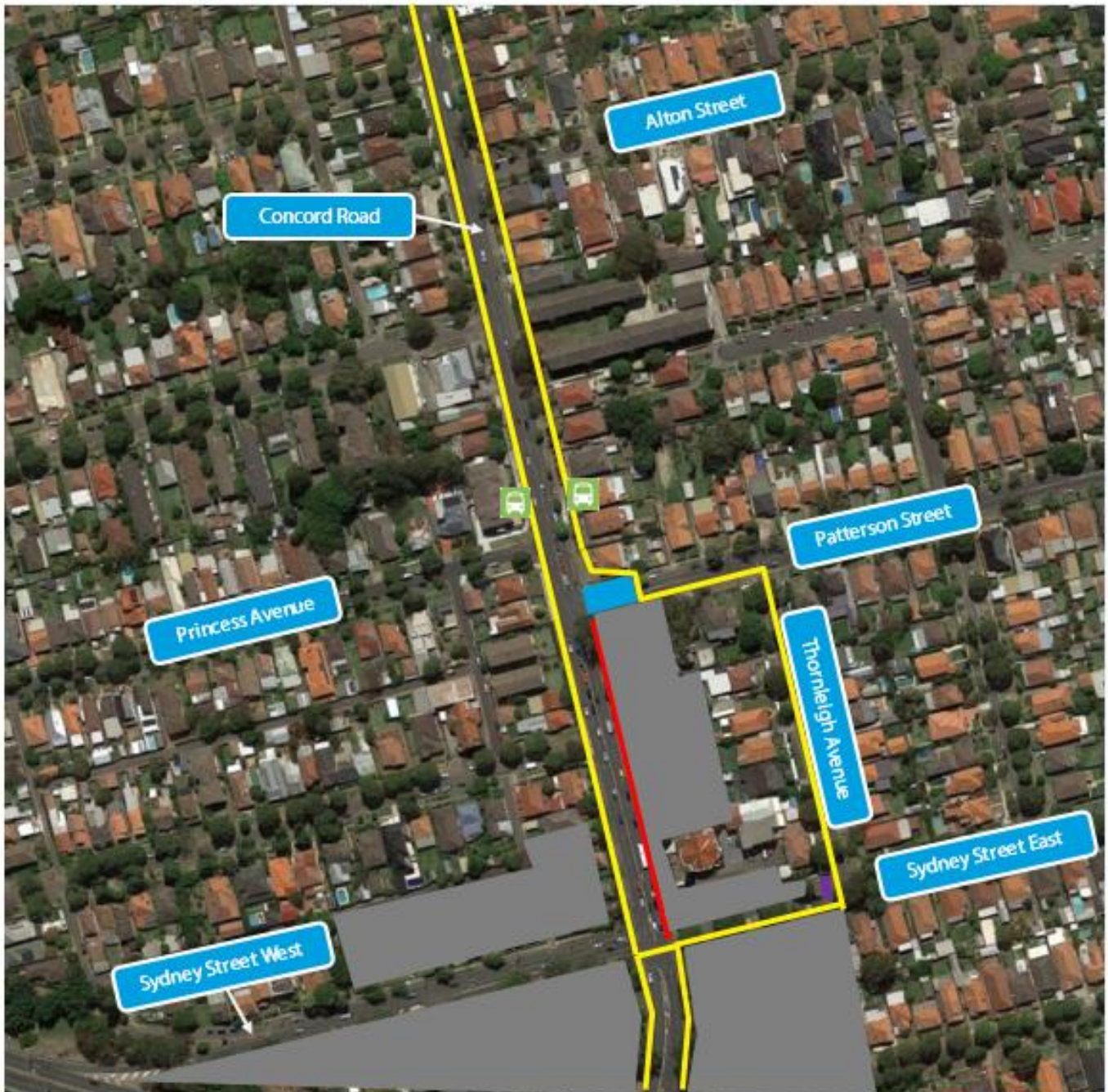


ensure the safety of motorists, residents and workers. Access to driveways will be maintained. If you travel along the work route, please allow extra travel time and follow the signage and direction of traffic controllers.

There will be some noise associated with this work. Every effort will be made to minimise this impact including by turning off equipment and vehicles when not in use and directing noisy equipment away from residences where possible.

If you have an enquiry or complaint about this work, please contact toll free 1800 660 248 and ask to speak to a member of the M4 East team or email [info@M4East.com.au](mailto:info@M4East.com.au).

## Location of works and pedestrian detour routes - Concord



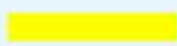
**Pedestrian closure**



**Open bus stop**



**Pedestrian walkway**



**Construction sites**



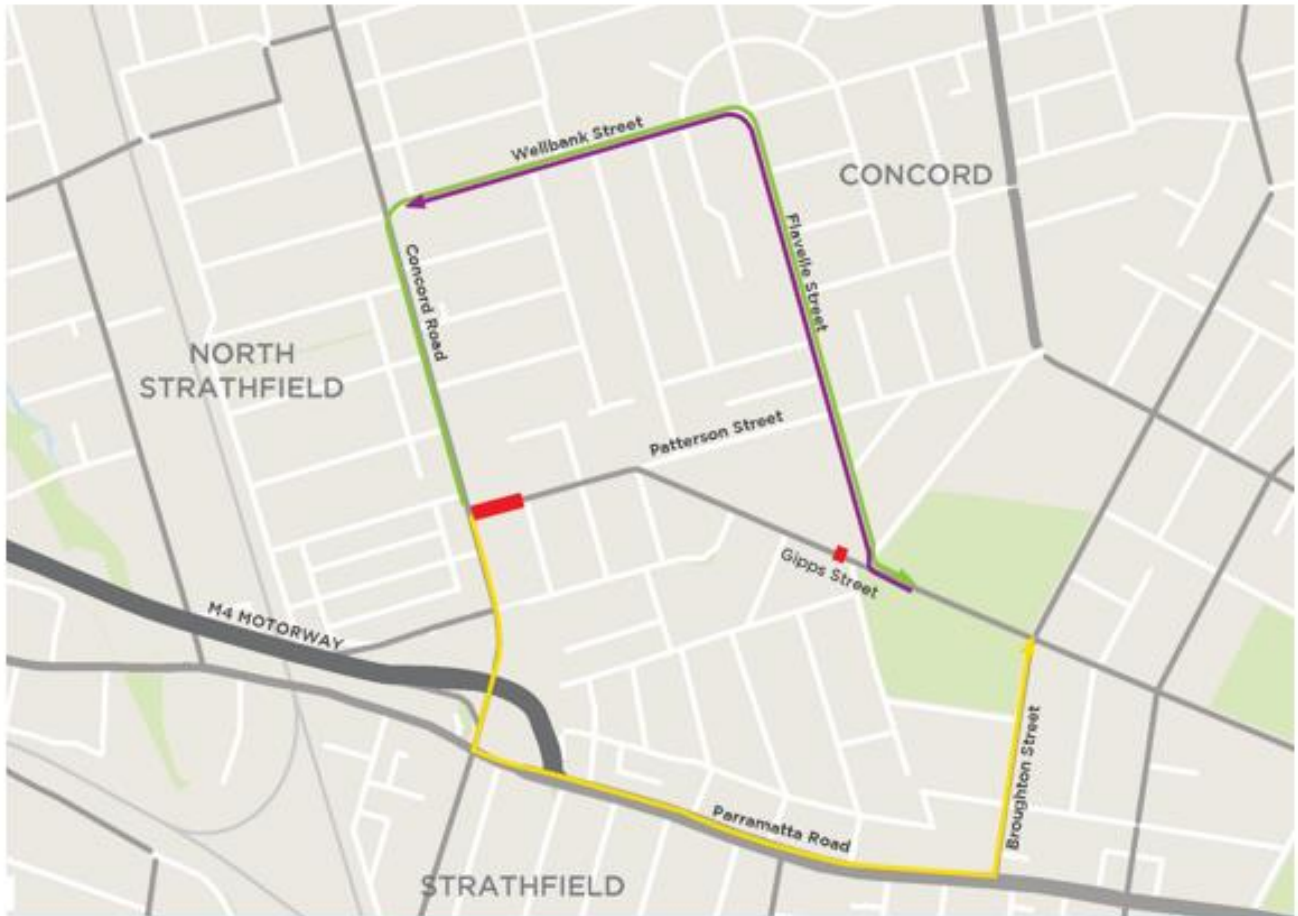
**Work location**



**Street closed  
(local access only)**



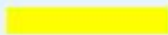
## Traffic detour routes - Concord



Road closures



Southbound detour



Northbound detour



Westbound detour

