

19 July 2017

Night work in Kingsgrove

Work will be undertaken in sections of the road verge, on the M5 East between Kingsgrove Road and King Georges Road to progress construction in Kingsgrove. A map showing the location of the work is provided overleaf.

Due to the high traffic volumes on the M5 East and for the safety of workers, pedestrians and motorists, this work will be carried out over four nights during the existing M5 East maintenance shutdown period from **Sunday 23 July 2017** (weather permitting). The work will be undertaken between **6.00 pm and 5.00 am**.

The work to be carried out includes:

- Removing existing concrete safety barriers from the road verge, repositioning and adding new barriers
- Installing safety screen guards along barriers
- Removing noise wall panels south of the motorway
- New line markings to set up lanes for site access
- Continuing work on underground utility services
- Relocation of telecommunication services and inspection of the drainage line
- Installing bollards near site access gates
- Sheet piling in the eastbound lane of the motorway.

Construction Impacts

Equipment to be used during this the work will include sheet piling rig, excavators, lighting towers, concrete cutters, vacuum truck, generators, cranes, hand drills, compressors and pumps as well as construction vehicles.

Some of this work may be noisy. Every effort will be made to reduce the impact to residents and businesses, as well as pedestrians and cyclists while work takes place. Noise monitoring will be conducted for any work that takes place outside of standard hours. Any dust generating activities will be watered down to minimise dust.

Traffic control and signage will be in place to assist road users through these changed traffic conditions.

If you have any complaints or enquiries about this work, please call **1800 660 248** (24 hours) and ask to speak to a member of the New M5 community engagement team.

ABOUT WESTCONNEX

WestConnex is part of a broader transport plan for Sydney which includes improved public transport, such as Sydney Metro and light rail, as well as better, more reliable motorway solutions. More than two-thirds of WestConnex will be built underground. Once complete, motorists will be able to avoid up to 52 sets of traffic lights and enjoy significant travel time savings.

For more information



Easing
congestion

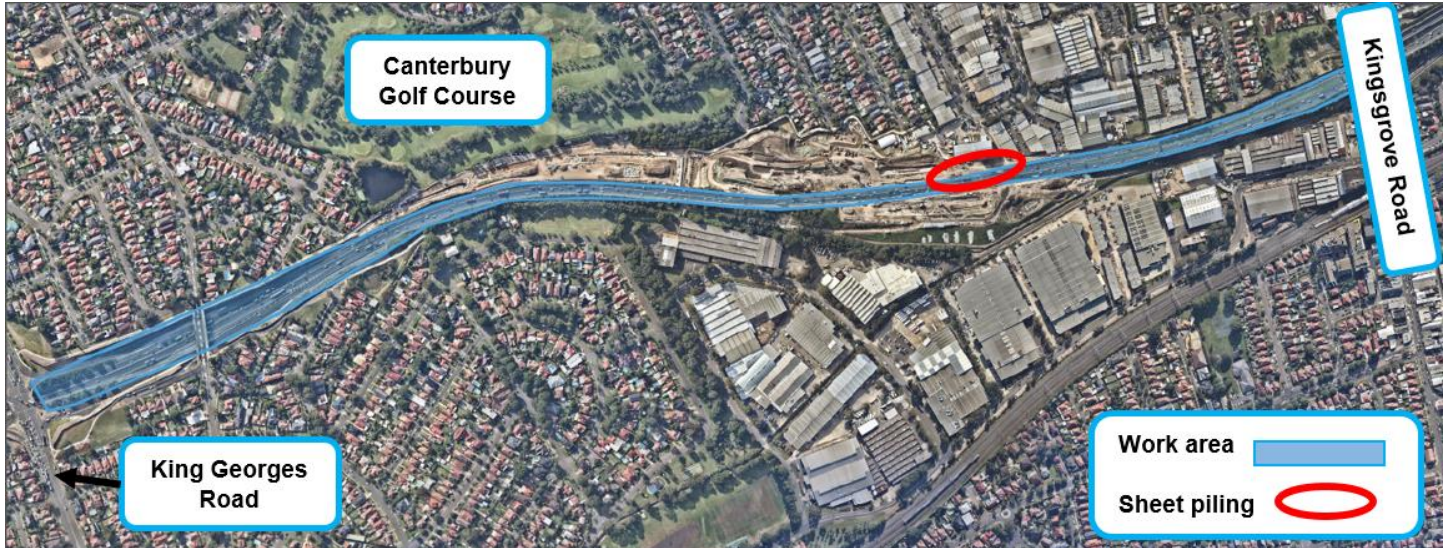


Creating
jobs



Connecting
communities

Approximate location of night work on the M5 East, Kingsgrove



We speak your language

ENGLISH

To learn more, simply visit westconnex.com.au/yourlanguage. Need an interpreter? Call the Translating and Interpreting Service on 131 450.

ARABIC

لمعرفة المزيد، ما عليك سوى زيارة westconnex.com.au/yourlanguage. بحاجة إلى مترجم؟ اتصل بخدمة الترجمة الكتابية والترجمة الشفوية على الرقم 131450.

CHINESE

如需了解更多详情，请访问westconnex.com.au/yourlanguage。如需翻译，请拨打翻译与口译热线131 450

GREEK

Για να μάθετε περισσότερα, απλά επισκεφθείτε το westconnex.com.au/yourlanguage. Χρειάζεστε διερμηνέα; Καλέστε την Υπηρεσία Μεταφραστών και Διερμηνέων στο 131 450.

HINDI

अधिक जानने के लिए केवल westconnex.com.au/yourlanguage पर देखें। क्या आपको दुभाषिए की जरूरत है? अनुवाद व दुभाषिया सेवा को 131 450 पर फ़ोन करें।

ITALIAN

Per saperne di più, vai semplicemente al sito westconnex.com.au/yourlanguage. Hai bisogno di un interprete? Chiama il servizio d'interpretazione e traduzione al numero 131 450.

KOREAN

더 자세히 알고 싶으시면, 바로 westconnex.com.au/yourlanguage 를 방문하시면 됩니다. 통역사가 필요하십니까? 번역 및 통역 서비스에 131 450으로 연락하십시오.

VIETNAMESE

Để biết thêm, chỉ cần tới trang mạng westconnex.com.au/yourlanguage. Cần thông dịch viên? Hãy điện thoại cho Dịch vụ Thông Phiên Dịch ở số 131 450.

Notification no. 236