



Traffic and property access changes on Gardeners Road between Ricketty Street and Kent Road from 6am on Wednesday 6 March

A new work area will be established at the western end of Gardeners Road as part of the construction of the new bridge linking Gardeners Road to the new St Peters Interchange. To facilitate this work, traffic and property access changes will be implemented on Gardeners Road between Venice Street and Kent Road.

Establishment of the new work area is scheduled to take place during one-night work shift from 6pm Tuesday 5 March to 6am Wednesday 6 March (inclusive). The new traffic configuration will be in place from 6am on Wednesday 6 March.

Due to the necessary safety and traffic approvals required to implement the traffic and access changes, this work will be carried out outside of peak traffic times.

What we're doing

During the night shift concrete work barriers will be placed around the new work area. From 6pm Tuesday 5 March these barriers will restrict access from Gardeners Road into Venice Street, and from Gardeners Road into business premises at no.697 Gardeners Road. The following traffic changes will be implemented:

- A new access driveway into business premises at no.697 Gardeners Road will be opened directly across from no.685 Gardeners Road.
- Approximately 7 car spaces will be removed in front of no.685 Gardeners Road to allow heavy vehicle turning circle access to the new driveway.

Please see the map overleaf for further details.

Traffic changes

During the night work shift, a full road closure will be in place on Gardeners Road between Ricketty Street and Kent Road. Traffic controllers will be in place around the work area to maintain access to local businesses, and on surrounding streets to direct pedestrians and motorists. Please expect delays during this work.

Following the completion of the night work, from 6am Wednesday 6 March, the following traffic changes will be in place:

- Access from Gardeners Road to Venice Street westbound will remain closed
- Access from Gardeners Road to no.697 Gardeners Road will be via the new driveway, located opposite 685 Gardeners Road

When

Night work to implement traffic and access changes: 6pm Tuesday 5 March to 6am Wednesday 6 March (inclusive).

Where

Gardeners Road between Ricketty Street and Kent Road

For more information

Drop in to the Community Information Centre
27 Burrows Road, St Peters
Mon to Fri, 9am to 5pm
(excluding public holidays)

We speak your language



Need an interpreter?
Call the Translating and Interpreting Service on **131 450**.

Notification No.635



Australian Government

BUILDING OUR FUTURE



Constructed by

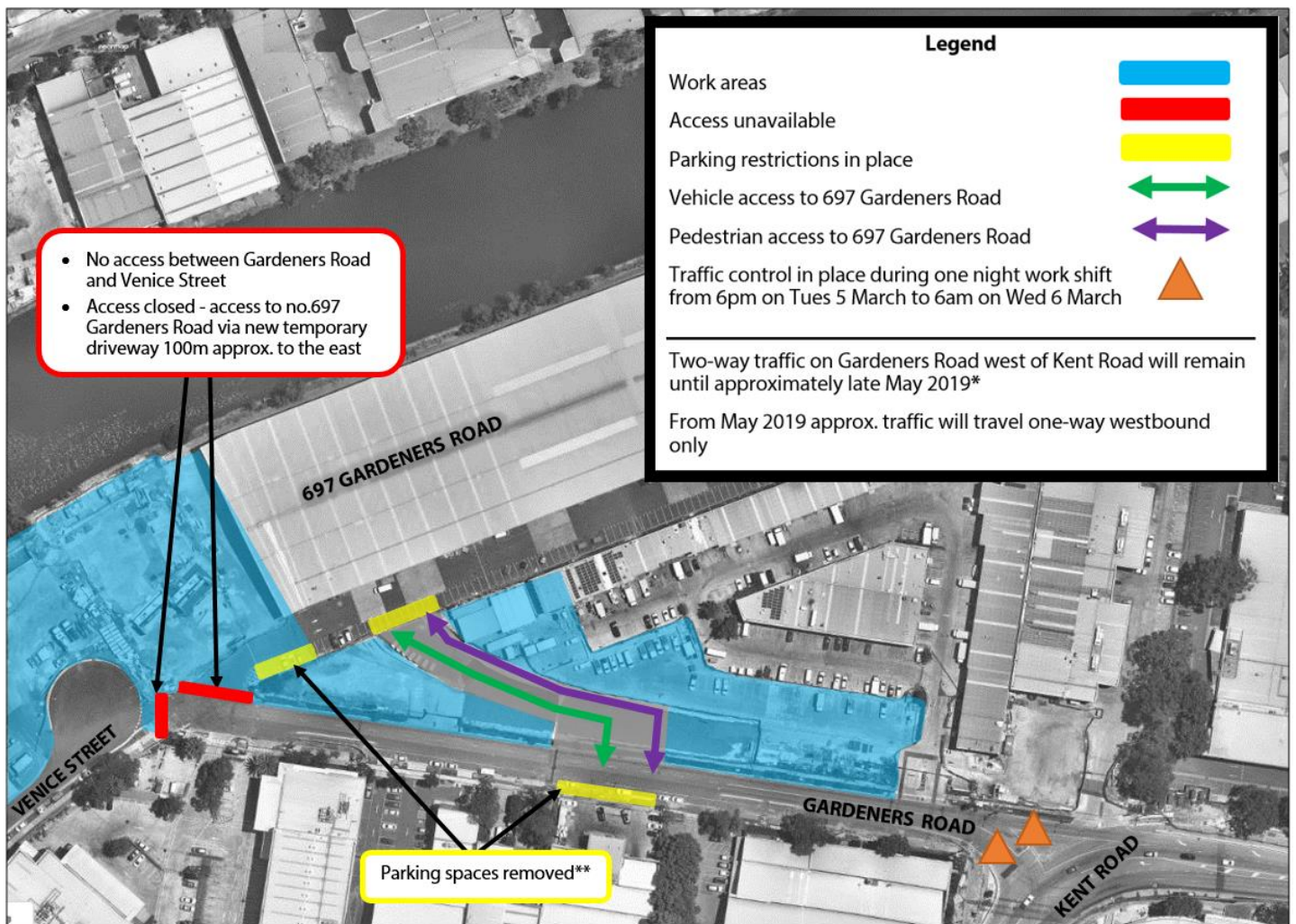


- Approximately 7 car spaces will be removed in front of no.685 Gardeners Road to allow heavy vehicles turning access to the new driveway.

How this affects you

Equipment used during night work will include lighting towers, line marking removal and line marking machines, a crane, traffic management and construction vehicles. The work is expected to generate some noise. Every effort will be made to minimise noise and light spill associated with this work by scheduling any work that may have higher noise impacts to take place during the day (where possible). We will turn off equipment and vehicles when not in use, use non-tonal reversing beepers on all machinery and direct noise generating equipment and lights away from properties where possible.

Traffic changes on Gardeners Road, west of Kent Road, from 6am on Wednesday 6 March



* As per the New M5 Environmental Impact Statement (EIS) released in November 2015, traffic on Gardeners Road will become one-way travelling westbound between Kent Road and Venice Street. Once implemented, exit from Gardeners Road will be via Venice Street to Ricketty Street. The one-way traffic change is currently scheduled to be implemented in May 2019.

**Parking spaces will be removed as follows:

- Approximately 7 car parking spaces will be removed in front of no.685 Gardeners Road to permit heavy vehicles an appropriate turning circle into 697 Gardeners Road
- 18 car spaces removed within project boundary in front of no.697 Gardeners Road to allow for bridge construction and new access to/from Gardeners Road

For more information contact the Community Relations Team at info@newm5.com.au or call 1800 660 248 and ask to speak to a member of the WestConnex New M5 Community Relations Team.