

Night work, road closure and traffic changes on Campbell Street and Princes Highway, St Peters

Night work will be carried out to install concrete barriers on the eastern side of Princes Highway, St Peters between Campbell Street and Albert Street as shown on the map overleaf. Night work, traffic changes and a road closure are necessary to facilitate this work.

The work will involve removal of existing line marking, painting new line marking, signage installation and concrete barrier installation.

Timing and work hours

Night work will take place on **Thursday 4 January between 7pm and 5am**. This work will be conducted at night when traffic volumes are lower for the safety for workers, motorists, cyclists and pedestrians.

Traffic changes

On **Thursday 4 January from 7pm to 5am** concrete barriers will be installed on Princes Highway between Campbell Street and Albert Street. During this time the below traffic changes will occur:

- A road closure will be in place on Campbell Street from Princes Highway to Crown Street to facilitate the concrete barrier installation. No access into Campbell Street (east) from Princes Highway or Campbell Street (west). Local access only via Barwon Park road or Euston Road.
- No access into Campbell Road via Burrows Road. Local access only via Barwon Park Road or Euston Road
- Once installed, one of the three southbound lanes on Princes Highway from Campbell Street to Albert Street will be **closed until mid-February 2018**. There will still be two southbound lanes in use.

Traffic control and signage will be in place to assist motorists, pedestrians and cyclists through the changes. Vehicle access to properties will be maintained via detour during this work.

Equipment used

Franna, power tools, lighting towers, traffic control, hand tools and light vehicles will be used to complete the work.

Minimising community impact

The work is expected to create some noise impacts to nearby residents. Every effort will be made to minimise noise associated with this work by:

- turning off equipment and vehicles when not in use
- using non-tonal reversing beepers on all machinery during work
- directing noise generating equipment away from residential properties where possible

During the works, pedestrian and cyclist access will be detoured away from the work zone. Traffic control will be in place to manage traffic impacts.

Notification No.339

For more information

✉ info@newm5.com.au

☎ 1800 660 248

🌐 westconnex.com.au



Constructed by





Easing
congestion

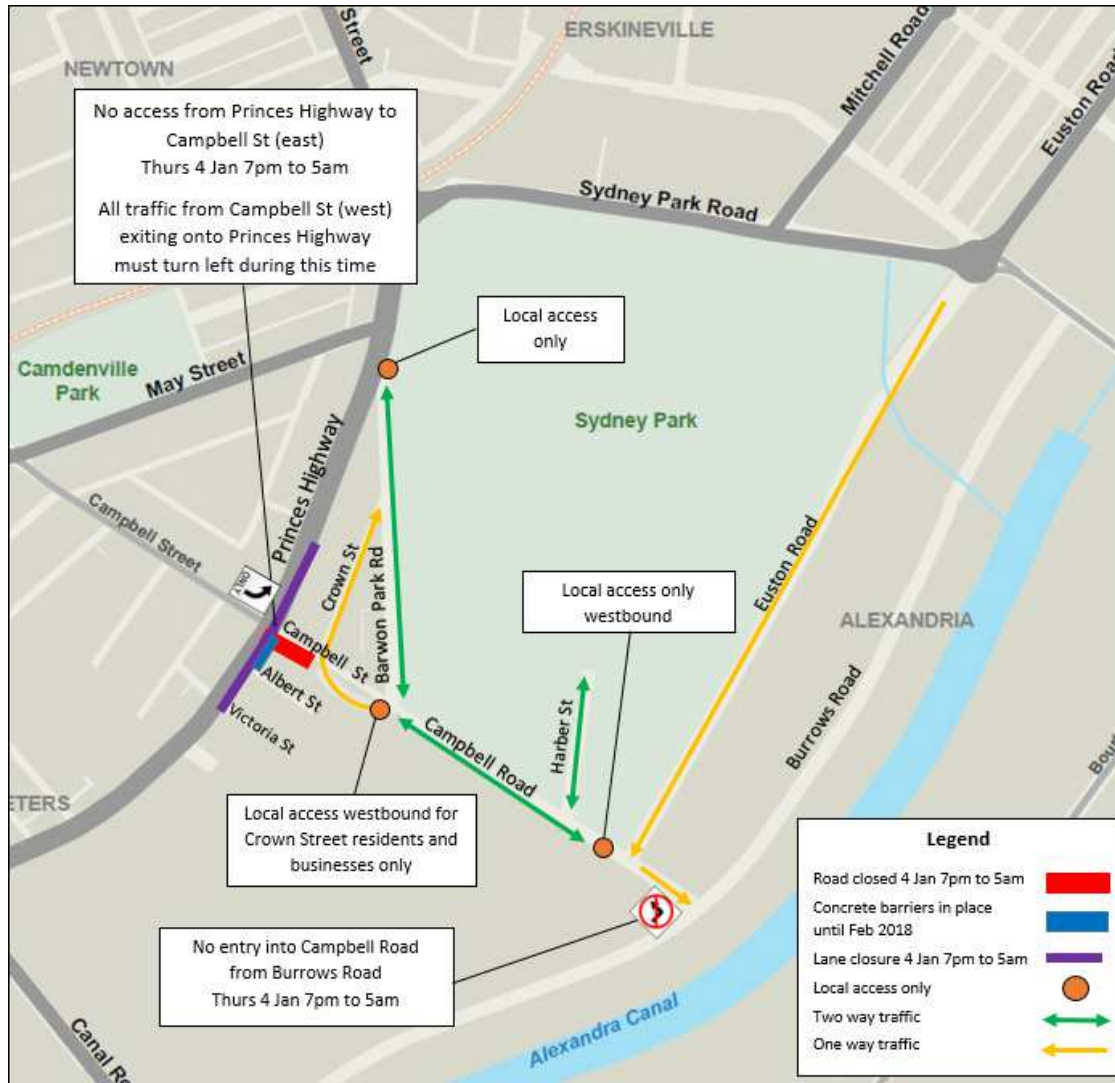


Creating
jobs



Connecting
communities

Location of work on Thursday 4 January between 7pm and 5am



More information

If you have any questions about this work, please call 1800 660 248 and ask to speak to a member of the New M5 Community Engagement Team or email info@newm5.com.au. You can also visit the New M5 Community Information Centre located at 27 Burrows Road St Peters. The centre is open on weekdays from 9am to 5pm.

The Community information Centre will close on Friday 22 December 2017 and reopen at 9am on Tuesday 2 January 2018.

We speak your language
To learn more simply visit westconnex.com.au/yourlanguage. Need an interpreter? Call the Translating and Interpreting Service on 131 450