

Traffic impacts on Campbell Road St Peters

The New M5 Project has been progressively installing a new 132kv electricity cable along Euston Road as part of the road widening. The cable comes from the substation located on Burrows Road and extends the length of Euston Road/McEvoy Street to a substation in Waterloo.

Work is required to connect the cable into an existing electrical pit located on Campbell Road between Euston Road and Burrows Road.

The pit which will need to be fully opened in order to safely work within, is located within the eastbound traffic lane on Campbell Road. The crew will need to create a trench, construct a new connection point for the conduits and backfill the ground.

Ongoing Traffic impacts

In order to safely perform this work, **Campbell Road between Euston Road and Burrows Road will be reduced to eastbound traffic only, from Tuesday 5 September 2017**. This will mean that motorists will not be able to enter Campbell Road from Burrows Road.

Closure of the westbound traffic lane will be in place for approximately 6 weeks, weather permitting.

Traffic control, signage and detours will be in place to guide motorists through the changed traffic conditions.

A map showing the ongoing traffic change is provided on the third page of this notification.

Night work

Night work will be required to establish the work site around the pit on Campbell Road. Concrete barriers will be placed along the road to delineate a safe working area. A crane and a forklift will be used to move the concrete barriers from the truck onto the road.

Some line marking will also be carried out the length of Campbell Road from Princes Highway to Euston Road, to correct some of the original markings. A line marking vehicle and small crew will be used to paint the road.

Night work will take place on **Monday 4 September and Tuesday 5 September 2017, weather permitting**. Work will take place between the hours of **9pm and 6am**.

There will be a full road closure of **Campbell Road between Princes Highway and Burrows Road, including a closure on Barwon Park Road**, during this night work. Access for residents will be available at two entrance/ exit points at Barwon Park Road/Princes Highway, and Campbell Road/Princes Highway.

A map showing traffic changes during night work is provided on the second page of this notification.

Notification No. 260

For more information

✉ info@newm5.com.au

☎ 1800 660 248

🌐 westconnex.com.au



Constructed by





Easing
congestion



Creating
jobs



Connecting
communities

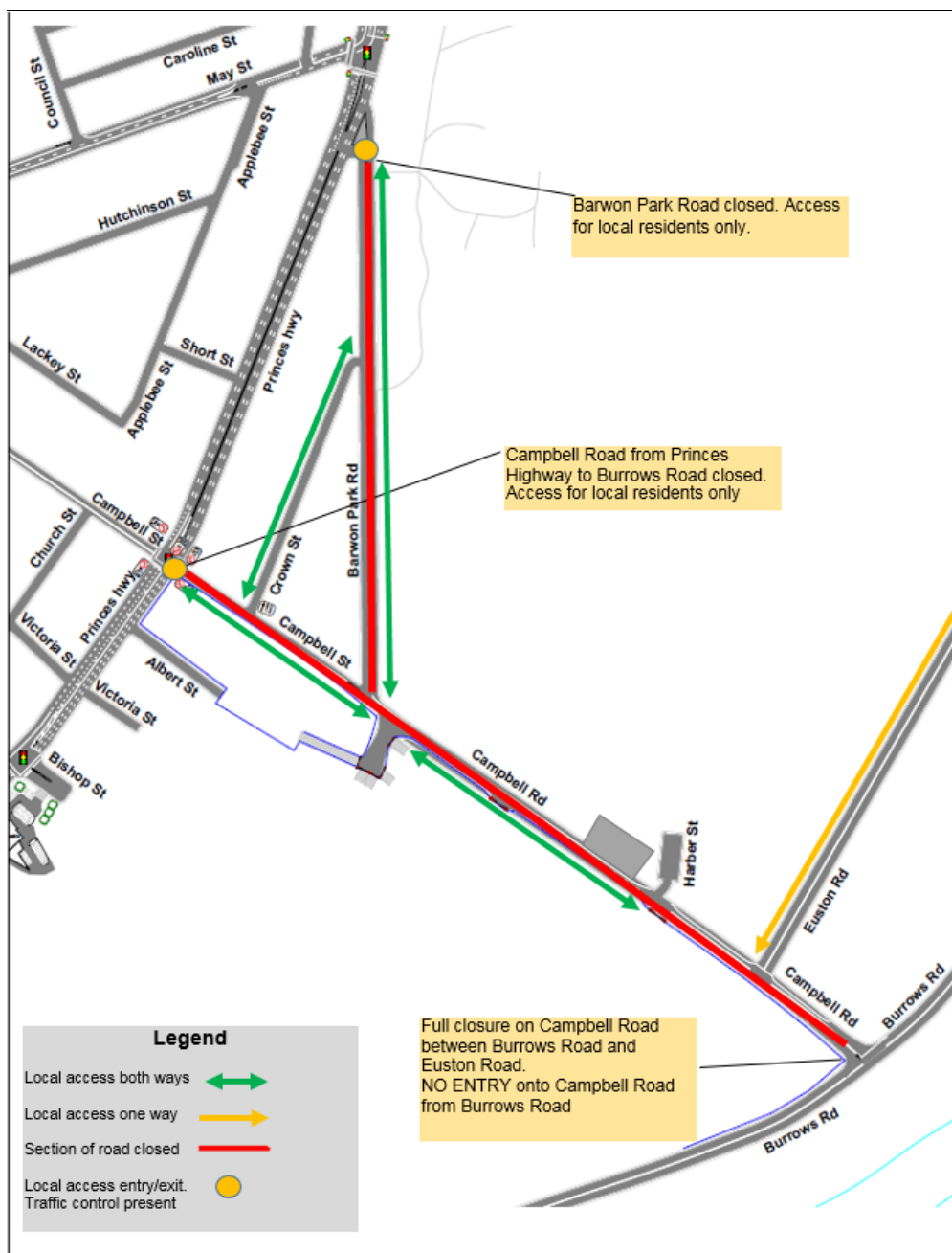
Minimising community impact

Residents are not expected to be impacted by noise from the night work.

Every effort will be made to minimise the impact of associated noise by:

- Scheduling noisy work to take place earlier in the night, or on limited nights, where possible
- Turning off equipment and vehicles when not in use
- Using non-tonal reversing beepers on all machinery

Traffic impacts during night work on Monday 4 September & Tuesday 5 September 2017





Easing congestion

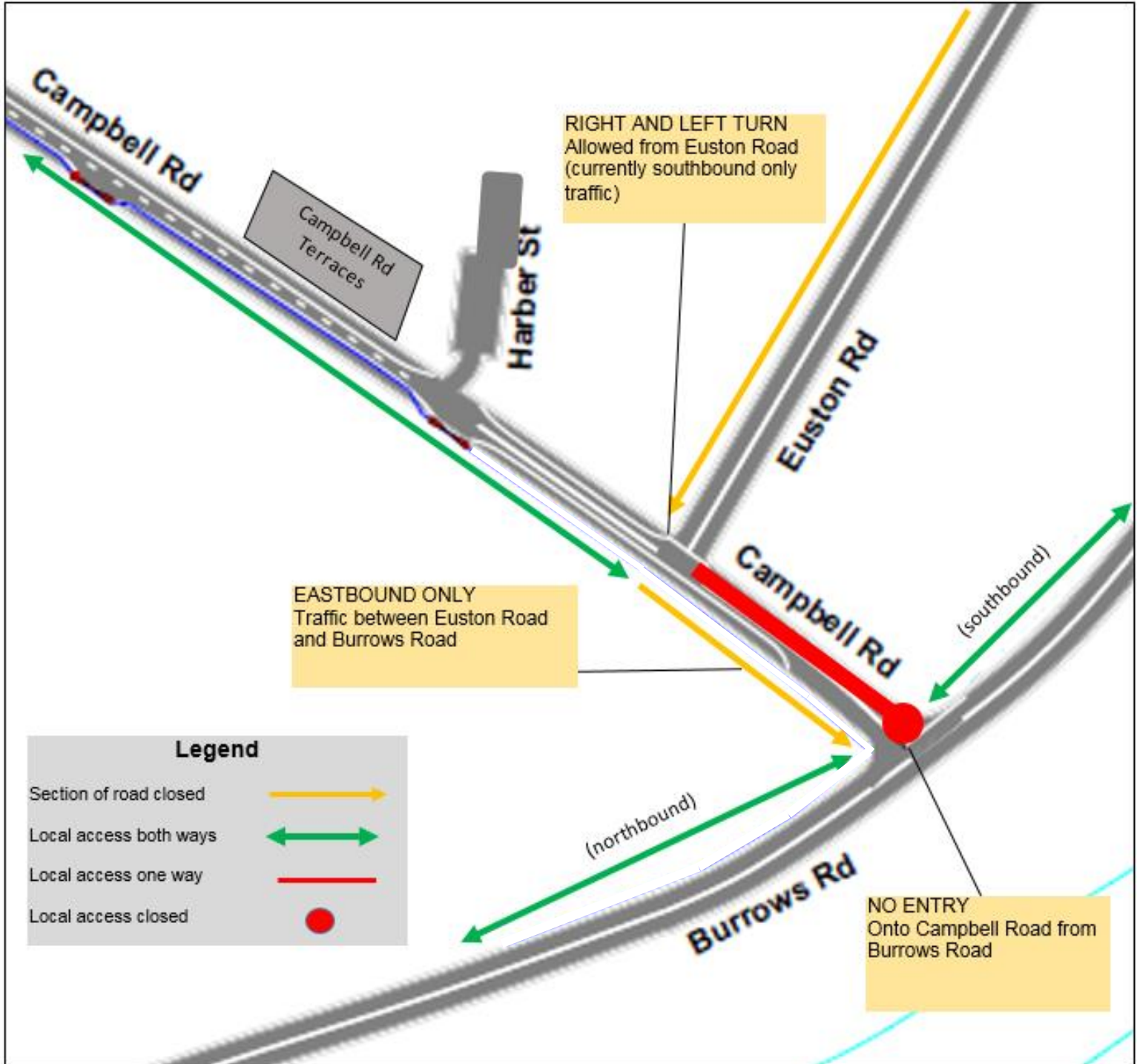


Creating jobs



Connecting communities

Traffic changes commencing Tuesday 5 September 2017 – eastbound traffic only on Campbell Road between Euston Road and Burrows Road St Peters



We speak your language

To learn more simply visit westconnex.com.au/yourlanguage. Need an interpreter? Call the Translating and Interpreting Service on 131 450